



Resultados PAR-PEL 2023-2027

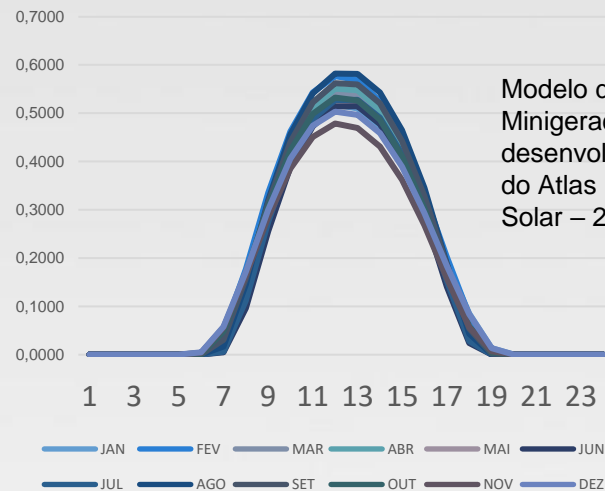
Reunião de 27/09/2022: Previsão da Carga Global e por Barramento Considerando MMGD

Potência Instalada Prevista (PI):

Total do Agente por Mês/Ano

FB_{PI}:
PI por Barramento por Mês/Ano

Curva de Radiação por UF R(h):



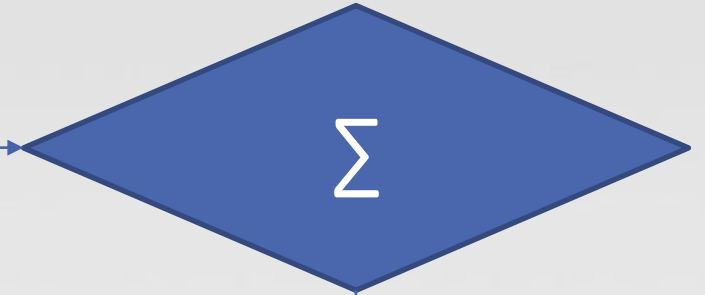
$$G(h) = PI \cdot FB_{PI} \cdot FC \cdot R(h)$$



Geração Horária do Barramento

Previsão por Mês/Ano

Totalização



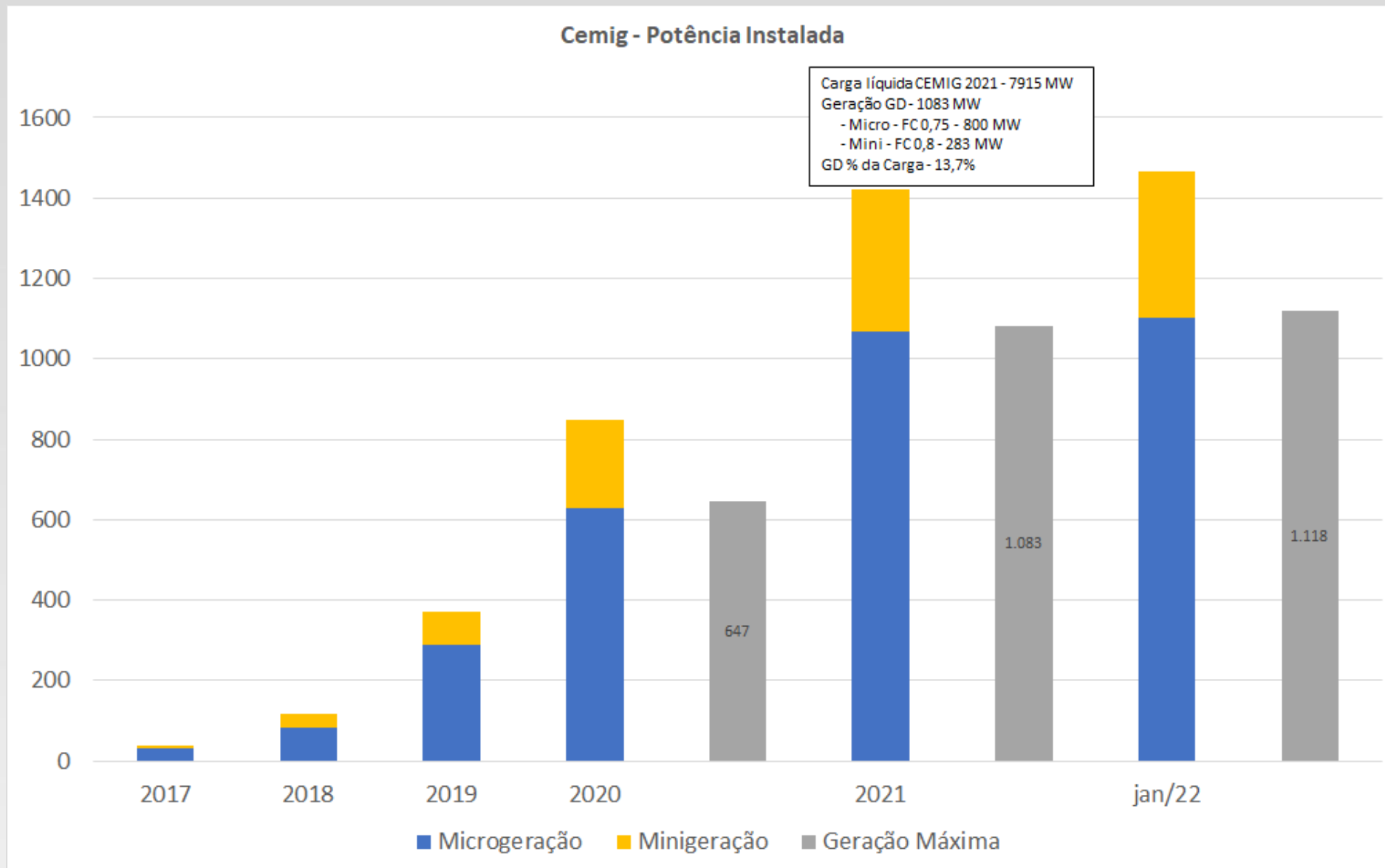
Geração Horária do Agente:

Previsão por Mês/Ano

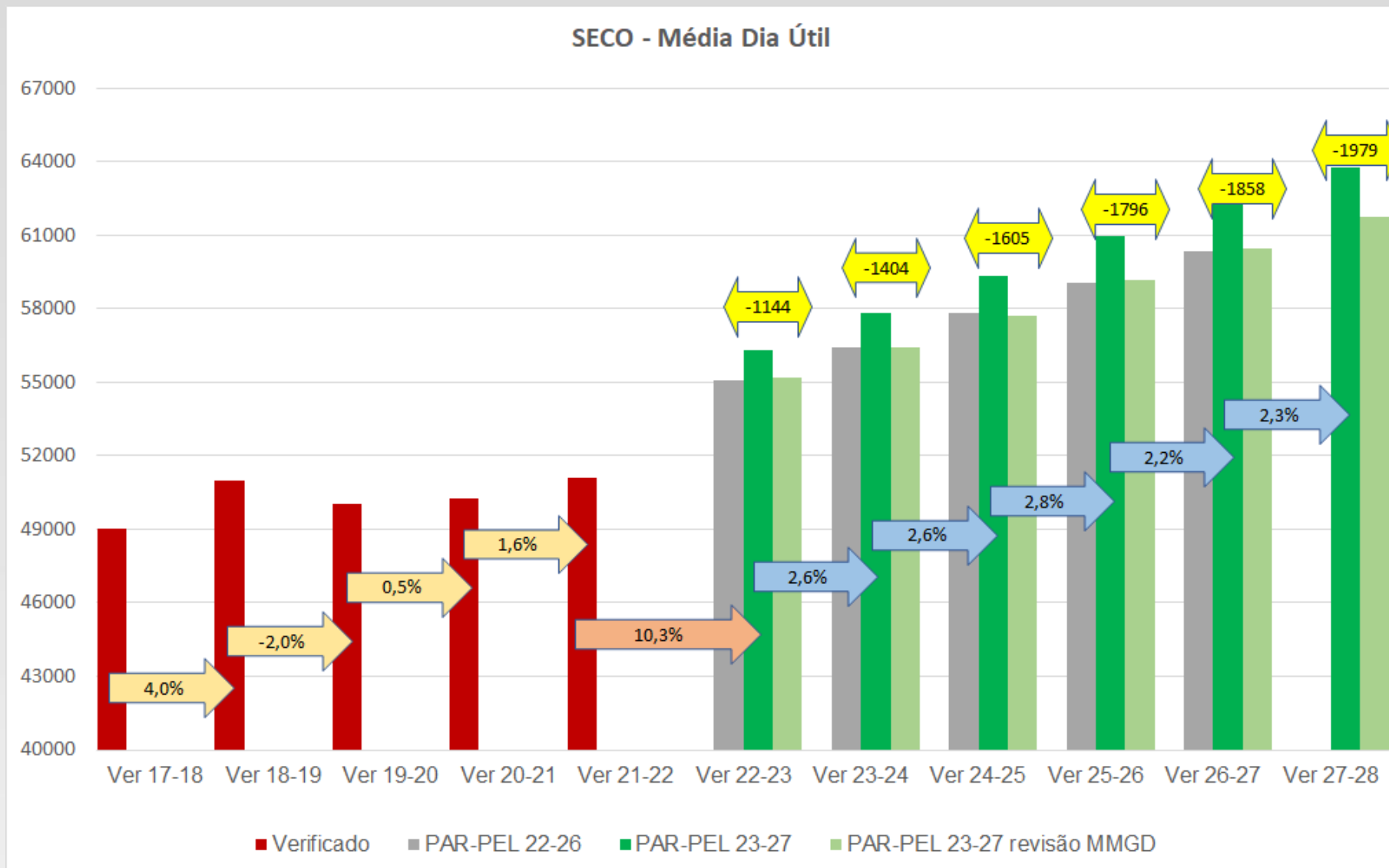
- **PAR-PEL 23-27**
 - Crescimento Partição 01 – 2%
 - Crescimento Partição 02 (MMGD) – 10 %
 - Crescimento Carga – 5%
 - Geração média de todas as horas da condição de carga

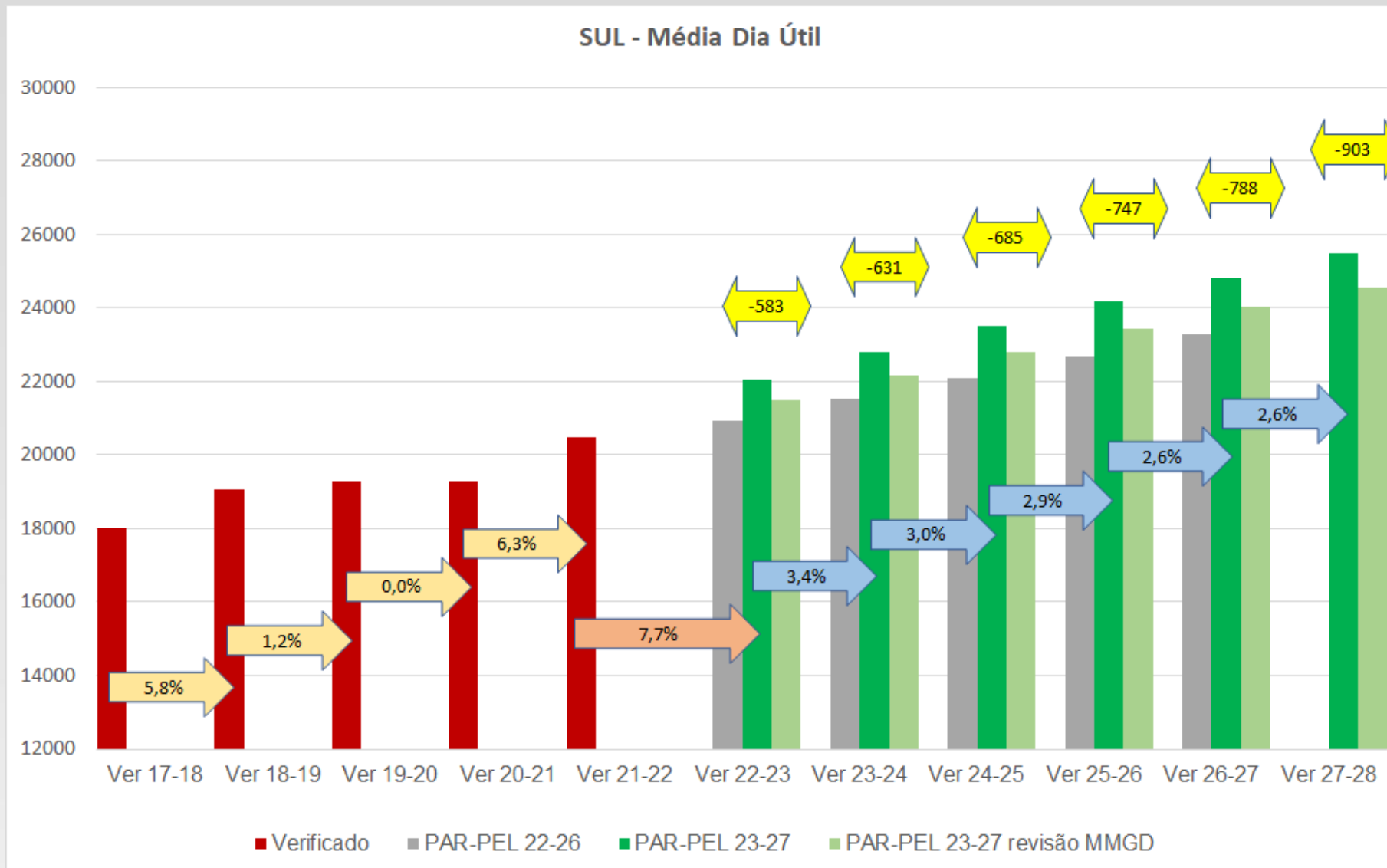
- **Proposta PAR-PEL 24-28**
 - Crescimento Partição 01 – 1%
 - Crescimento Partição 02 (MMGD) – 10 %
 - Crescimento Carga – 2%
 - Geração coincidente com o horário de carga mínima/máxima

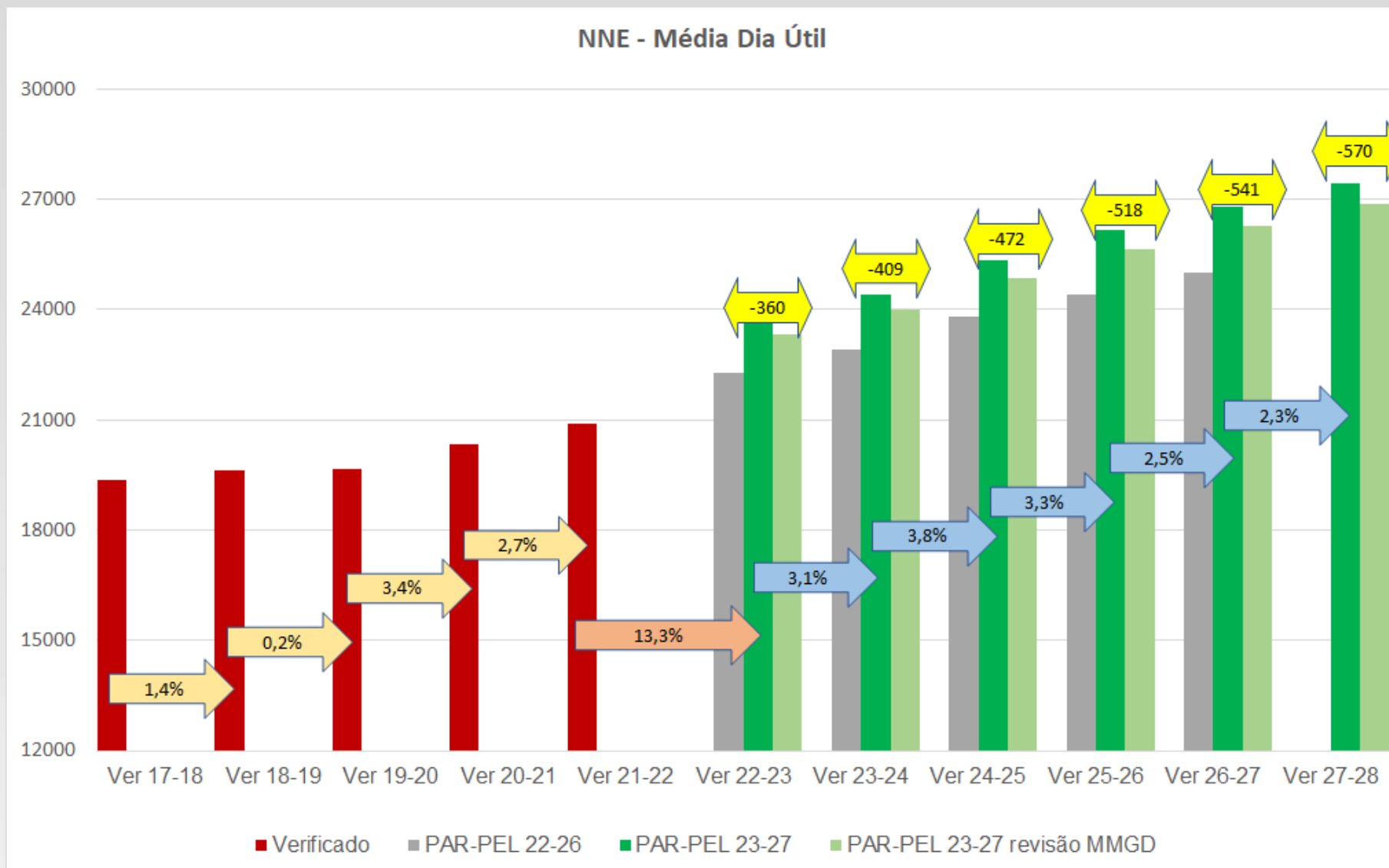
PAR-PEL 23-27	2021	2022	2023	2024	2025	2026	2027	2028	
Barra 01 - 1	100,0	102,0	104,0	106,1	108,2	110,4	112,6	114,9	Cresc 2%
Barra 01 - 2 (GD)	0,0	13	14,3	15,7	17,3	19,0	20,9	23,0	Cresc 10%
Barra 01G - 2 (GD)		11,7	12,9	14,2	15,6	17,1	18,8	20,7	
Global	100,0	115,0	118,3	121,9	125,5	129,4	133,6	137,9	Cresc 5%
Crescimento		15,0	2,9	3,0	3,0	3,1	3,2	3,3	
Proposta PAR-PEL 24-28									
	2021	2022	2023	2024	2025	2026	2027	2028	
Barra 01 - 1	100,0	89,0	89,7	90,4	90,9	91,4	91,7	91,8	Cresc -1%
Barra 01 - 2 (GD)	0,0	13,0	14,3	15,7	17,3	19,0	20,9	23,0	Cresc 10%
Barra 01G - 2 (GD)		13,0	14,3	15,7	17,3	19,0	20,9	23,0	
Global	100,0	102,0	104,0	106,1	108,2	110,4	112,6	114,9	Cresc 2%
Crescimento		2,0	2,0	2,0	2,0	2,0	2,0	2,0	



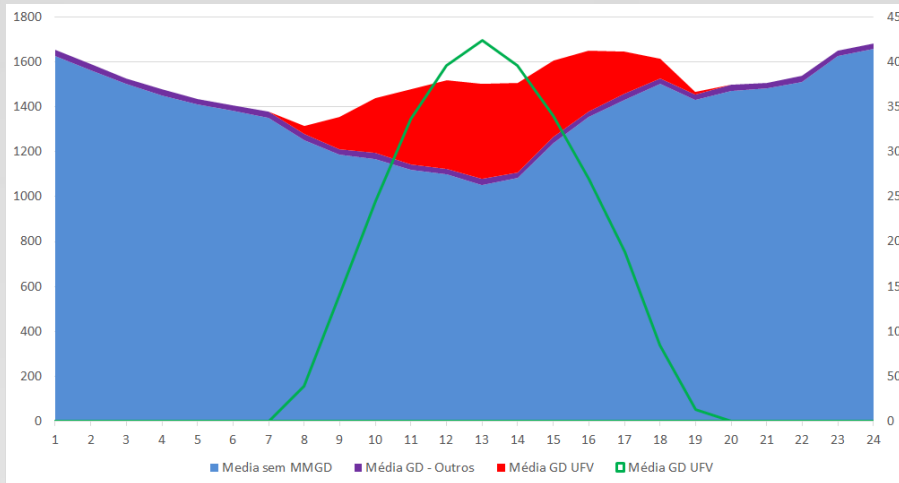
- Análises do Estudo:
 - Todas as empresas;
 - Por agrupamentos de barramentos de cada empresa, considerando os dados verificados atualizados até abril/2022;
 - Sensibilidade em relação aos dados encaminhados no ciclo anterior do PAR/PEL;
- Revisão da previsão de MMGD (partição 2), considerando:
 - Agrupamentos de 13 empresas do Sudeste/Centro-Oeste
 - Agrupamentos de 8 do Norte/Nordeste;
 - Agrupamentos de 9 do Sul/Mato Grosso do Sul
 - Reduzimos as previsões de carga atendida por MMGD em 0, 10%, 20%, ... 100%, dependendo de cada caso analisado;
 - Não foram realizados ajustes na geração de MMGD;
 - Devido à grande quantidade de informações a serem analisadas e o exíguo tempo, optamos por não ajustar a carga de agrupamentos em que a carga atendida por MMGD não chegou a 5% do total do agrupamento no ano de 2027.



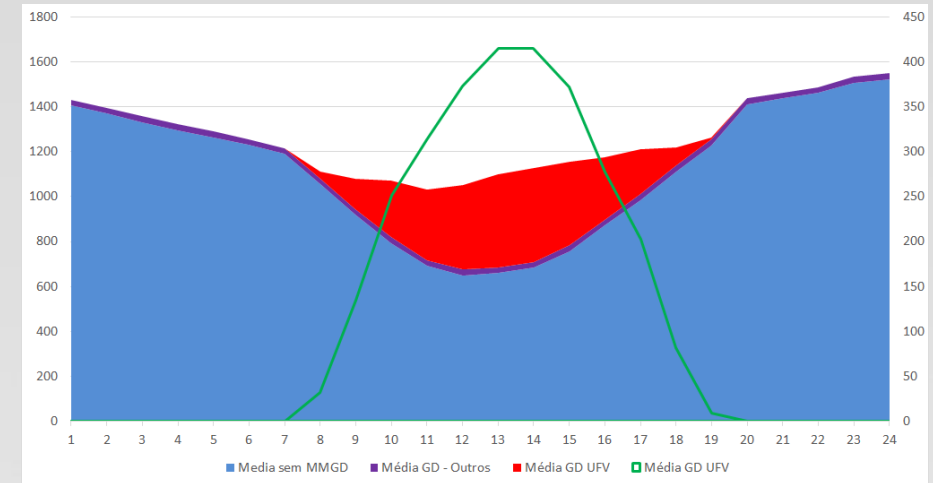




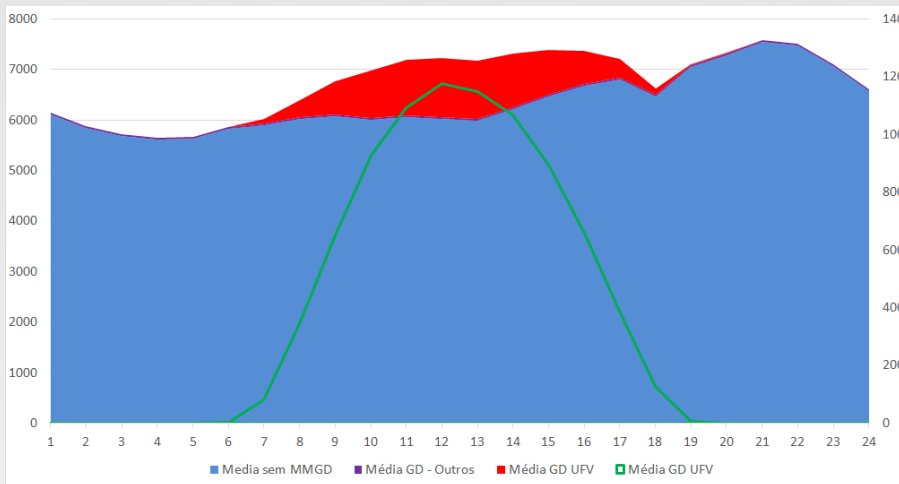
ENERGISA MT - Abril – Dia Útil



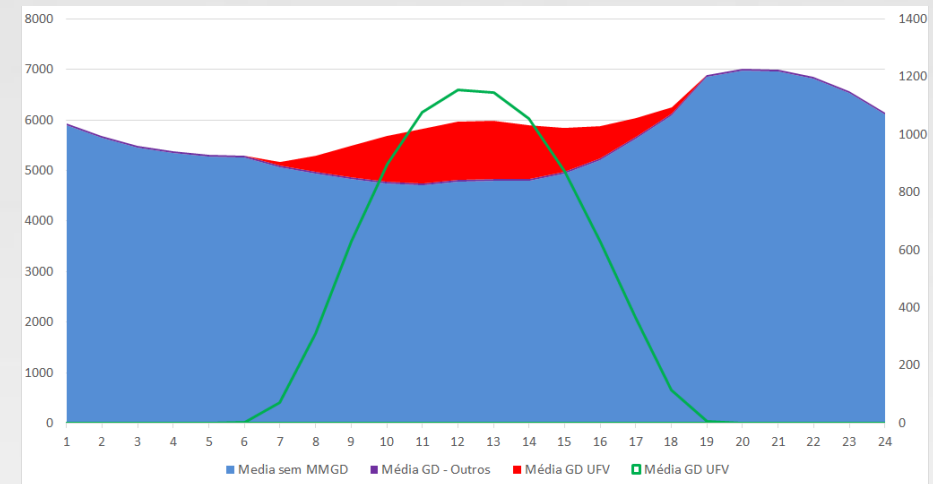
ENERGISA MT - Abril – Domingo



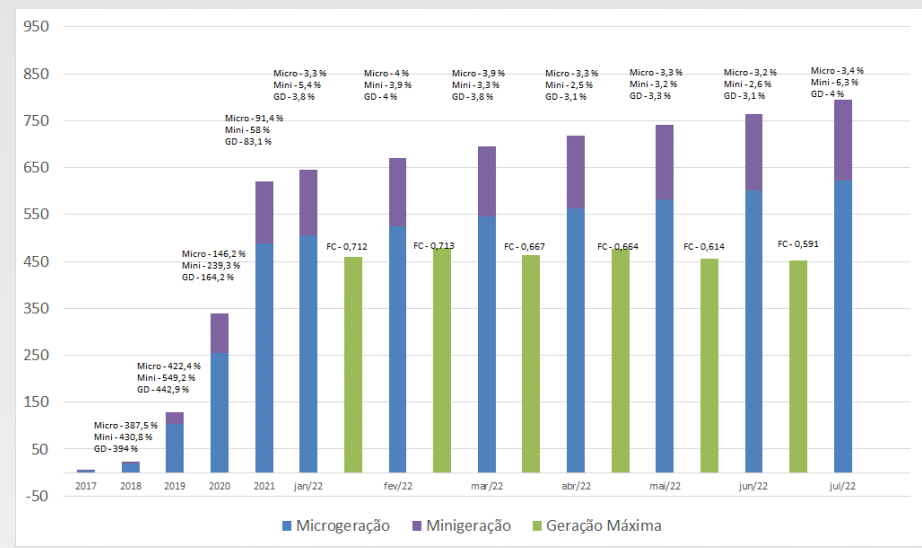
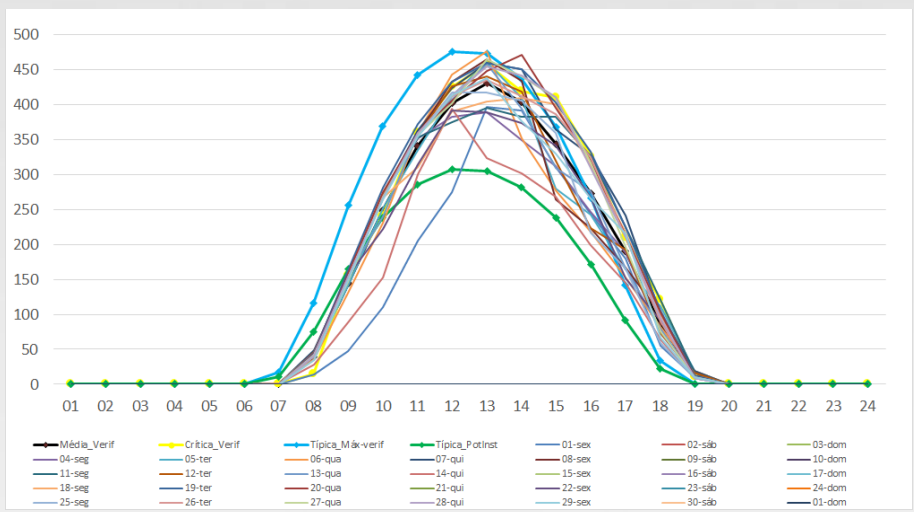
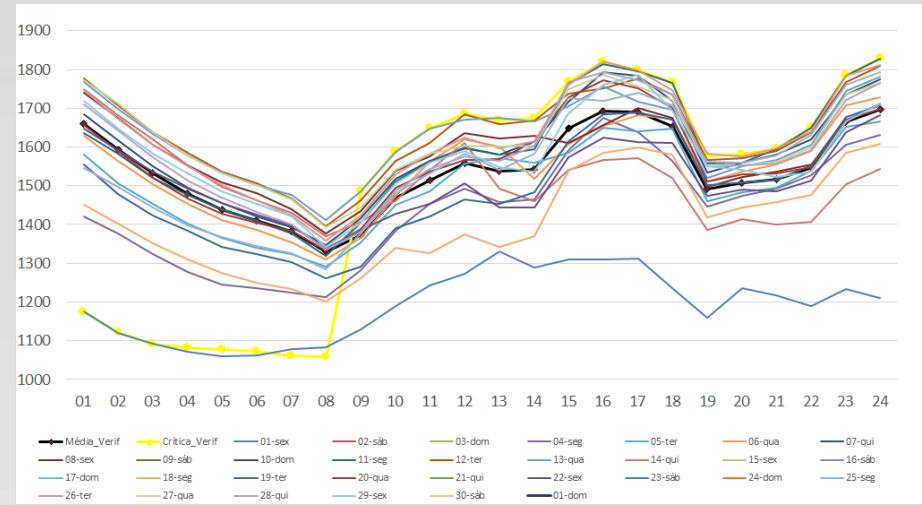
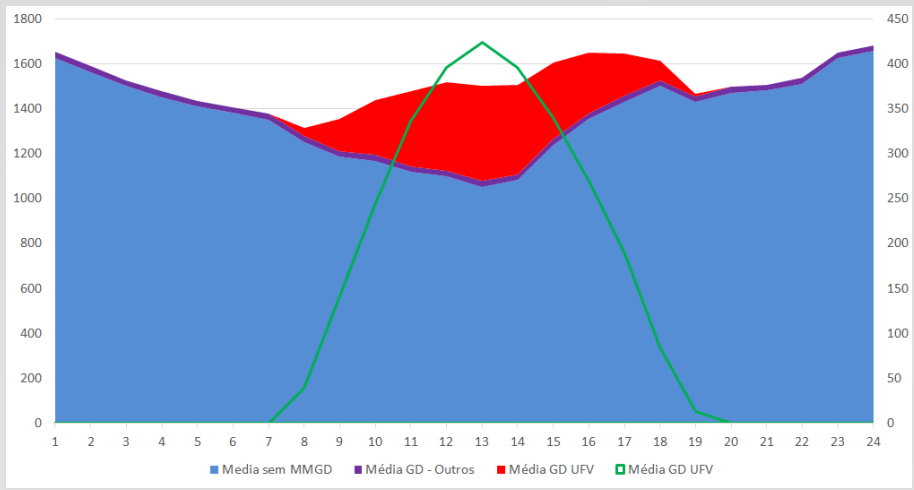
CEMIG- Março – Dia Útil



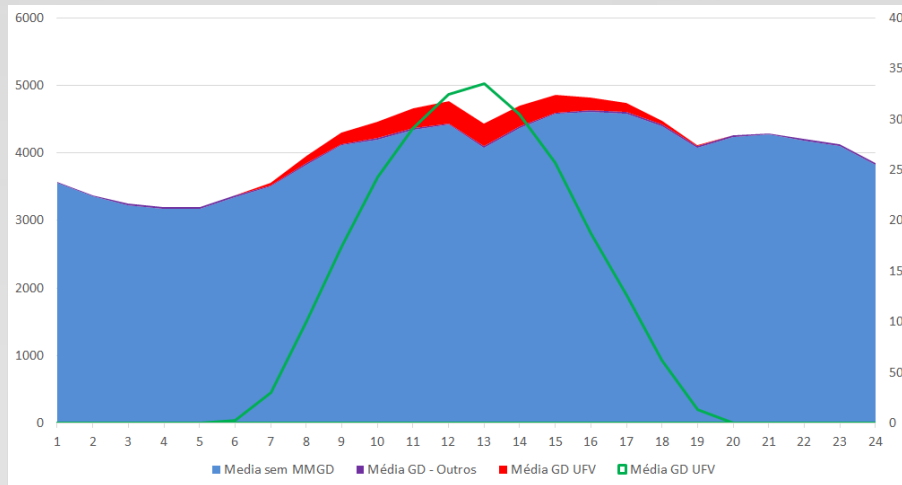
CEMIG- Março – Domingo



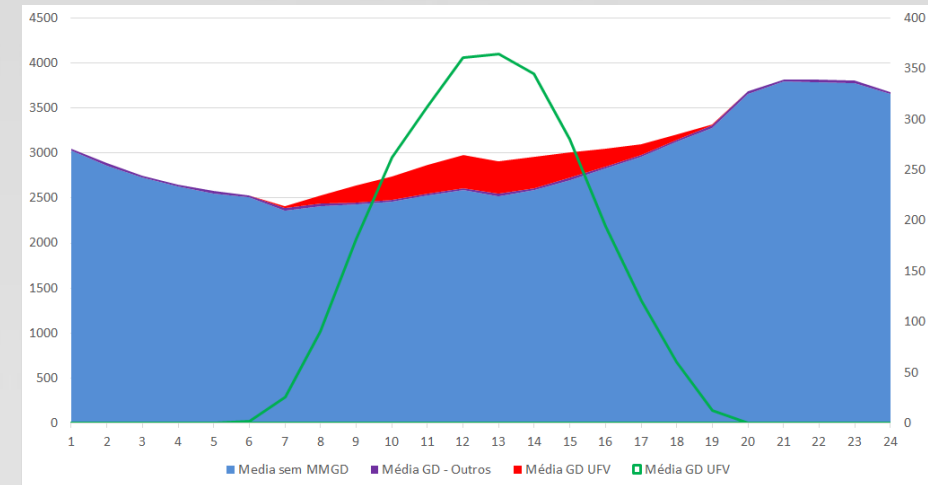
ENERGISA MT - Abril – Dia Útil



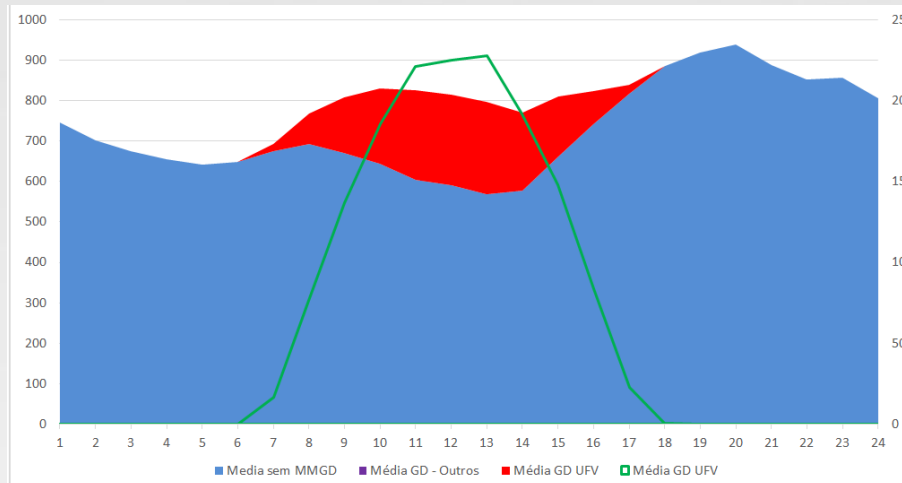
CELESC- Fevereiro – Dia Útil



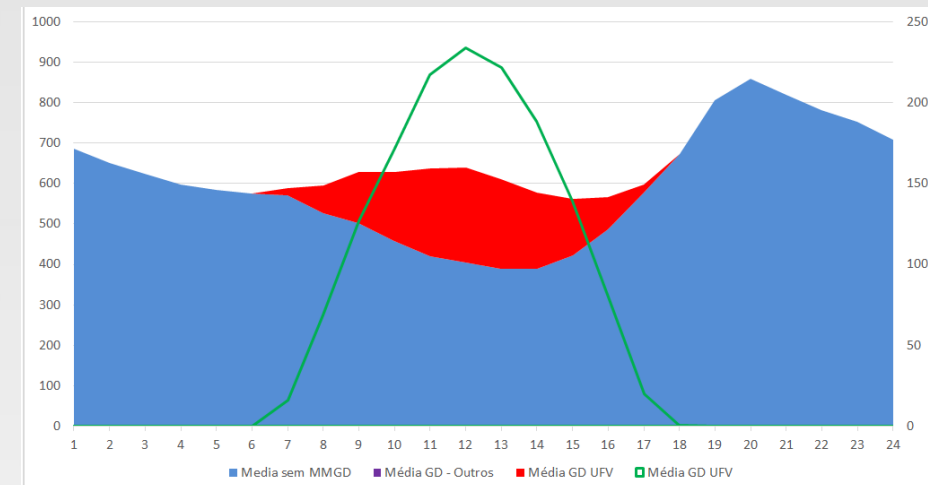
CELESC- Fevereiro – Domingo



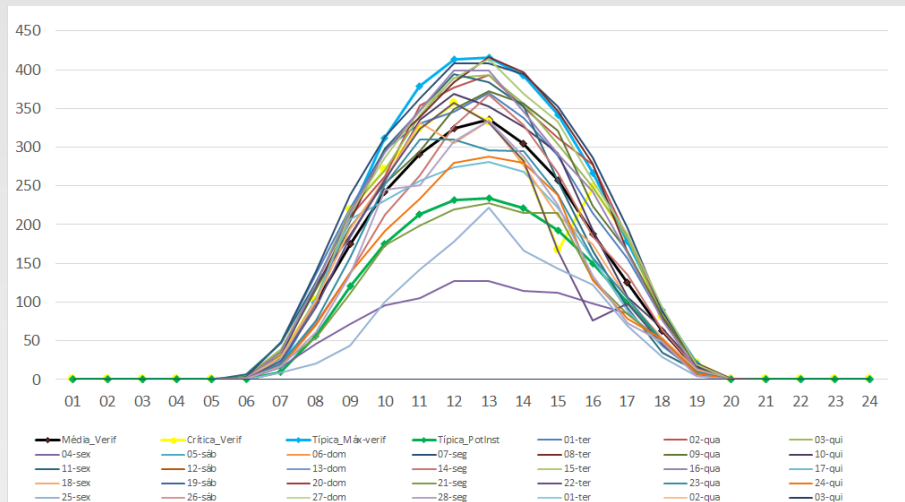
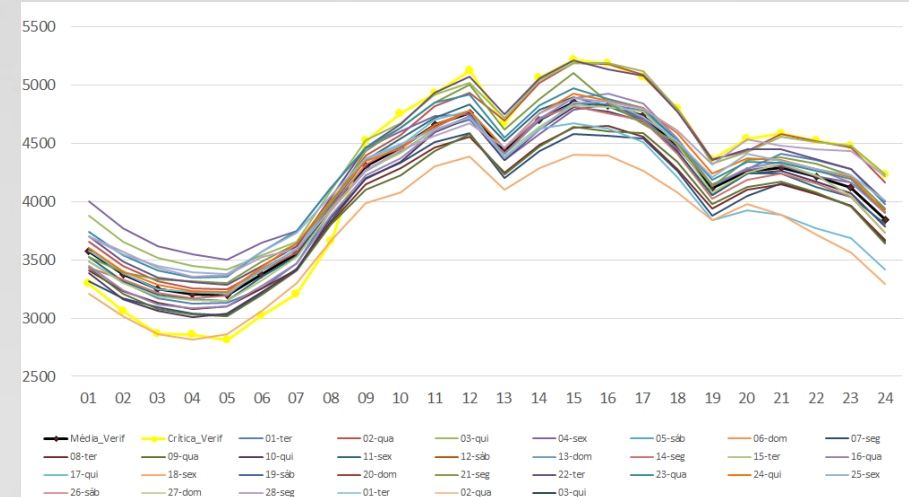
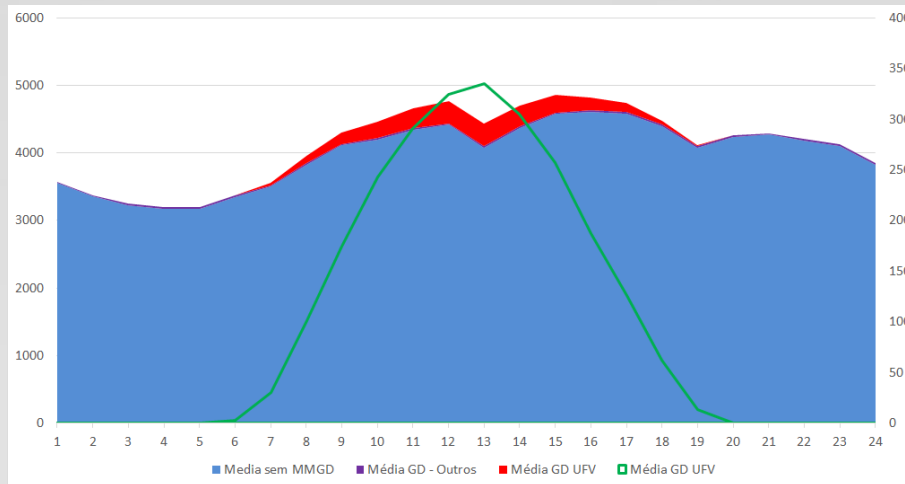
ENERGISA MS- Julho – Dia Útil



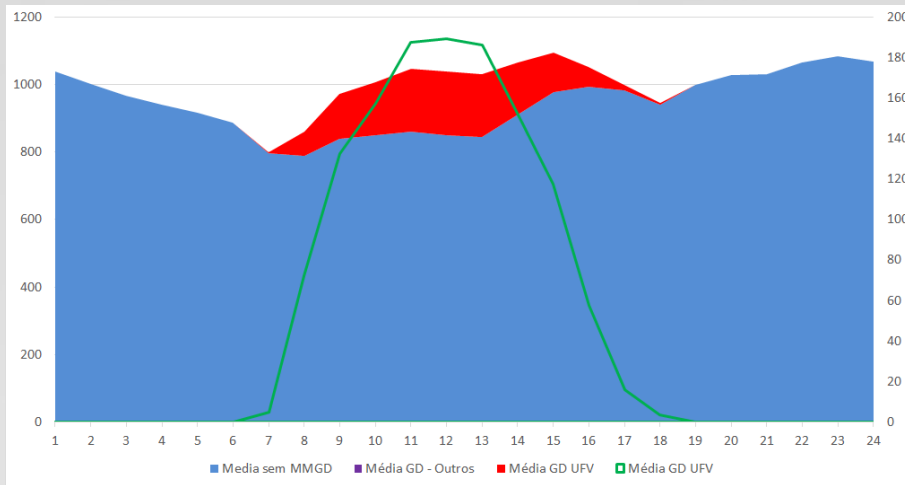
ENERGISA MS - Julho – Domingo



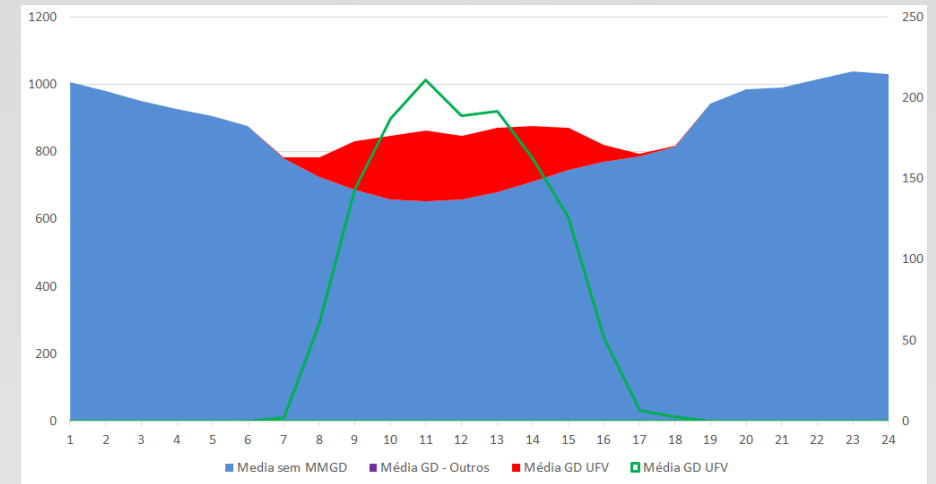
CELESC- Fevereiro – Dia Útil



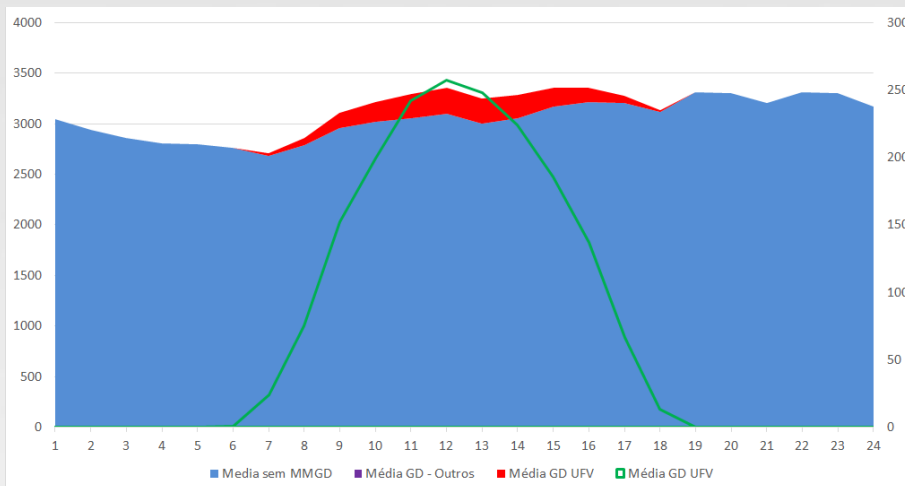
EQUATORIAL MA- Julho – Dia Útil



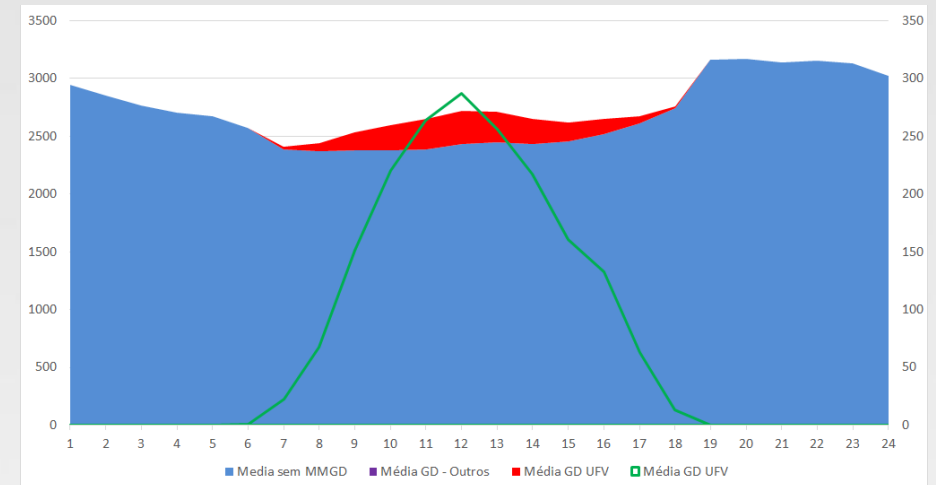
EQUATORIAL MA- Fevereiro – Domingo



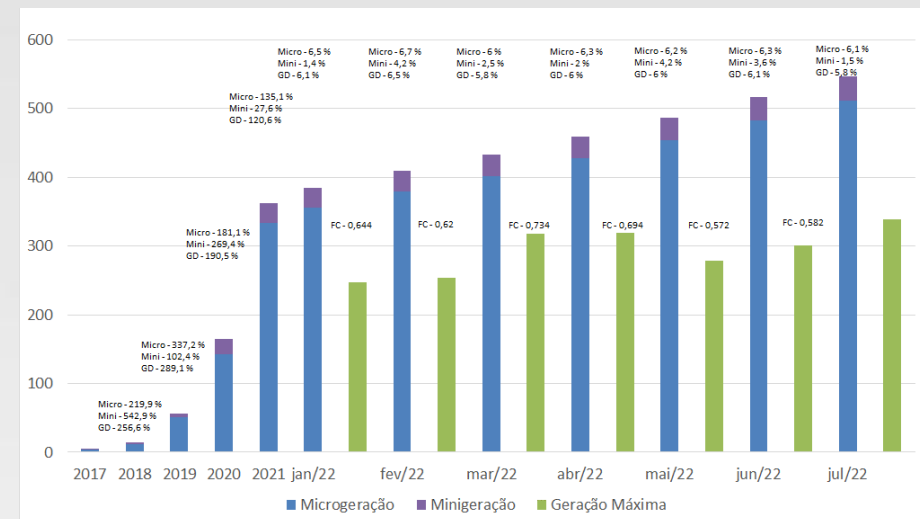
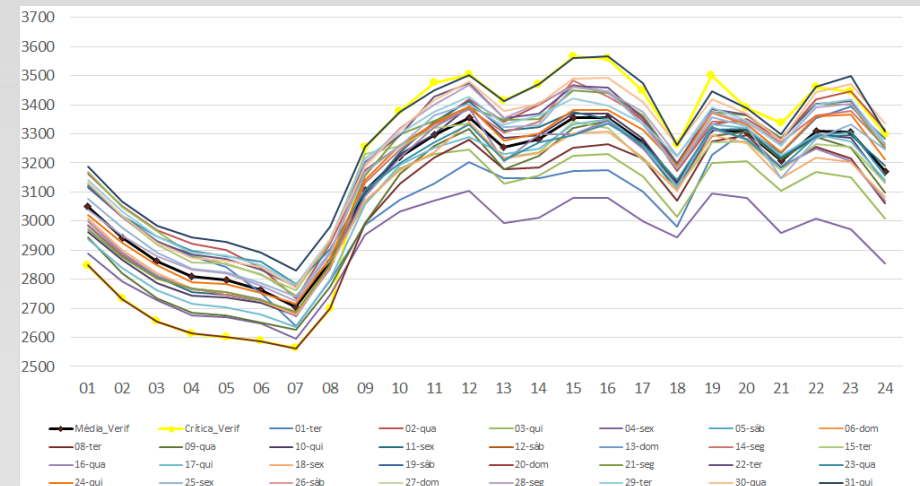
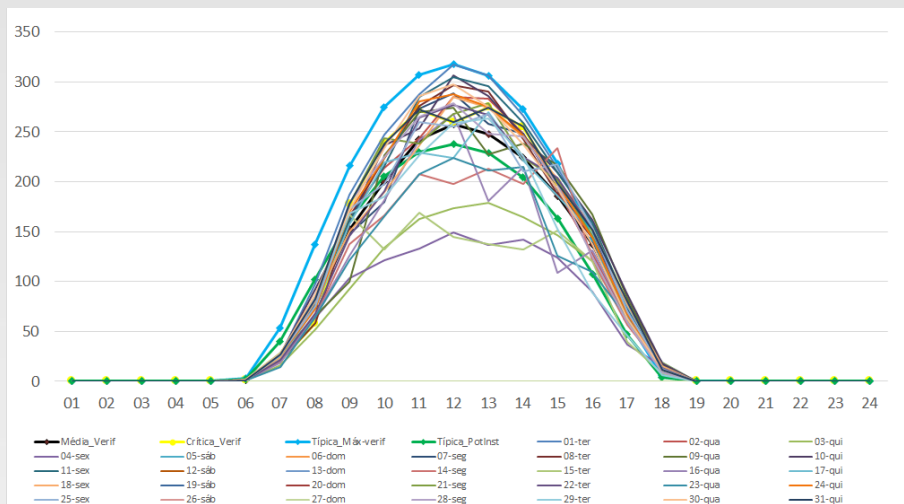
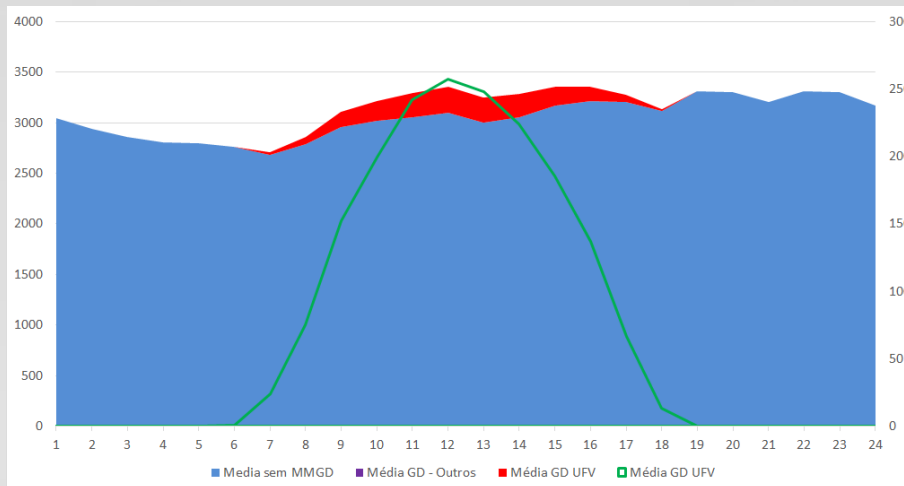
COELBA- Março – Dia Útil



COELBA- Março – Domingo

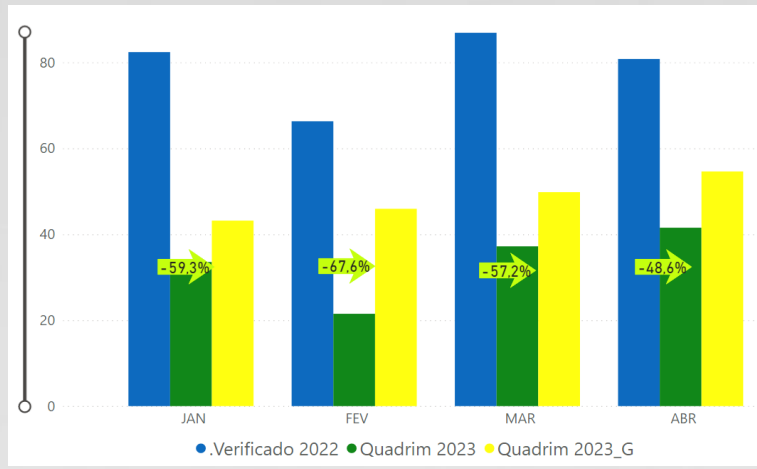


COELBA - Março – Dia Útil

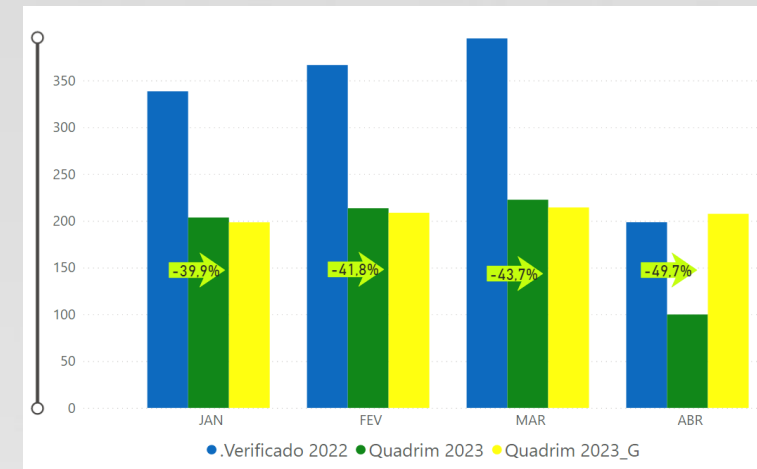


- Previsões MMGD 1° Quadrim/2023 - Condição de Carga Média de Dia Útil

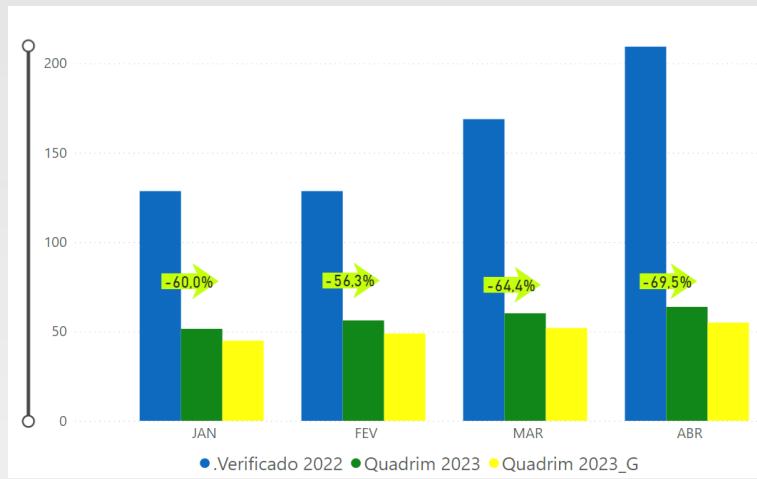
ENERGISA RO



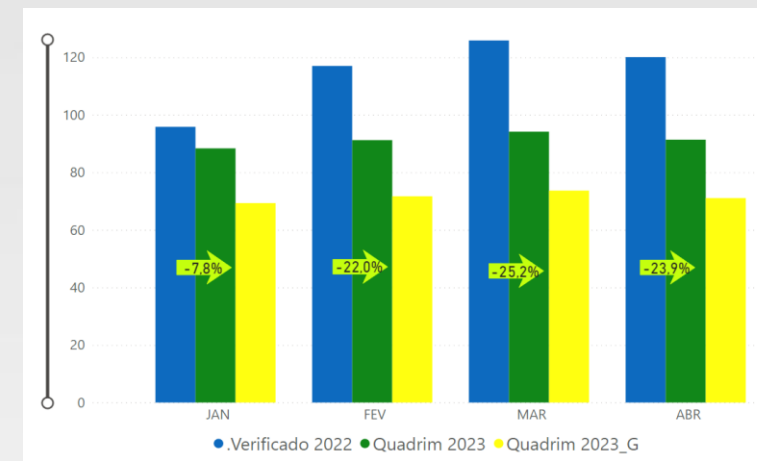
COPEL



EQUATORIAL MA-N

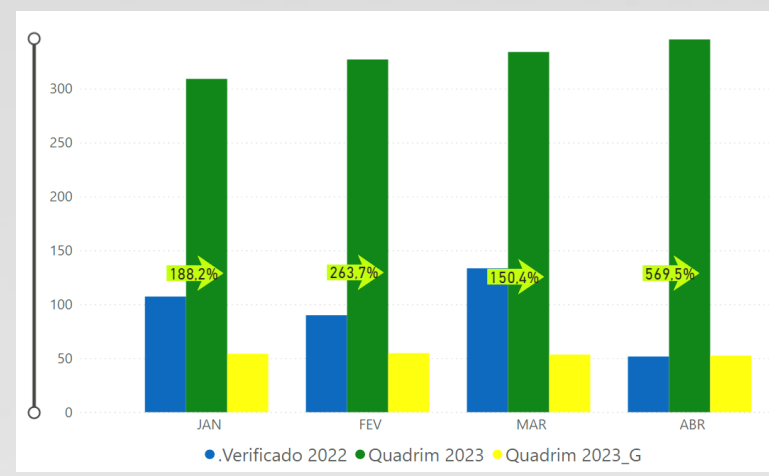


COSERN

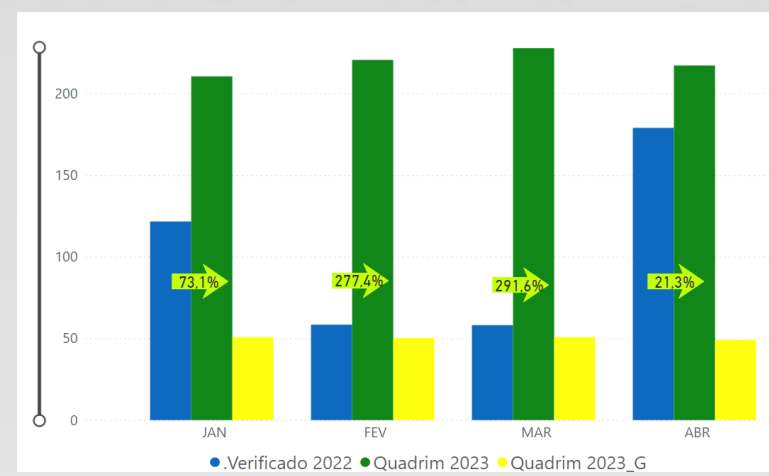


- Previsões MMGD 1º Quadrim/2023 - Condição de Carga Leve e Mínima

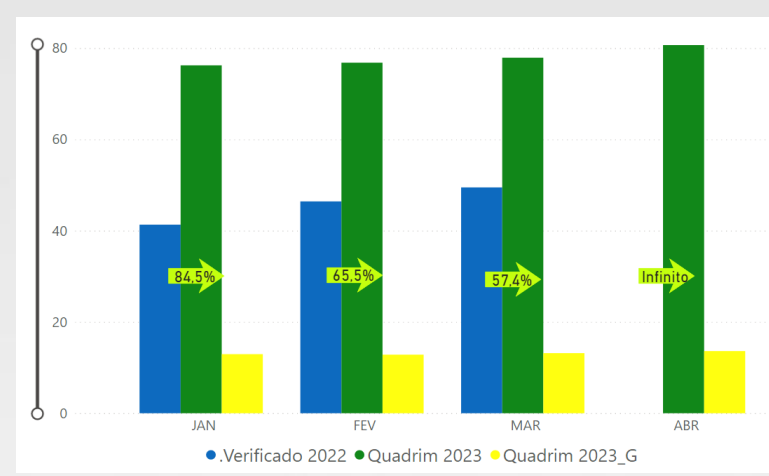
ENERGISA MT



ENERGISA MS



EQUATORIAL PA-N



ENEL CE

